

\$500,000 - 5217 55 Street, Cold Lake

MLS® #E4425436

\$500,000

0 Bedroom, 0.00 Bathroom,
Retail on 0.00 Acres

Cold Lake South, Cold Lake, AB

LOCATION!! Highway frontage in Cold Lake, its time to expand your business. This commercial mixed use property includes a spacious front, offers 4 offices, storage, a kitchen area and bathroom. This space was previously used as a tanning salon. The back of the building has a secured residence with a large kitchen/dining, living room, one bedroom and a laundry/bathroom. There is a detached single car garage and a large shop at the back of the lot (over 2100 sq ft) with two 14'X14' overhead doors, storage, bathroom, two hoists, built in bay winches and an air compressor. Currently has a thriving automotive repair business in operation. Explore the possibilities.

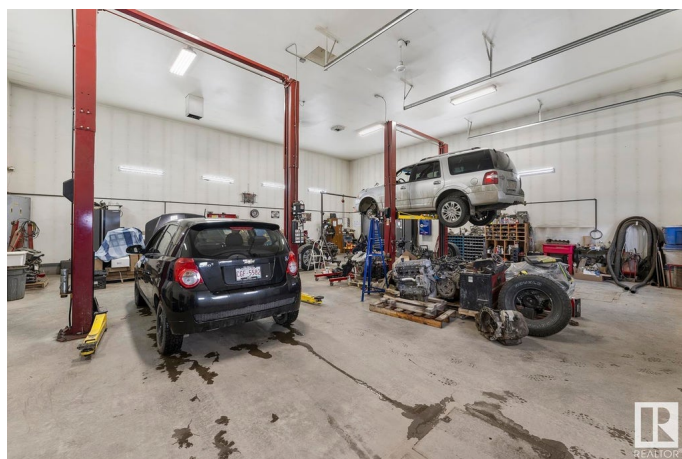
Built in 1963

Essential Information

| | |
|------------|-----------|
| MLS® # | E4425436 |
| Price | \$500,000 |
| Bathrooms | 0.00 |
| Acres | 0.00 |
| Year Built | 1963 |
| Type | Retail |
| Status | Active |

Community Information

Address 5217 55 Street



| | |
|-------------|-----------------|
| Area | Cold Lake |
| Subdivision | Cold Lake South |
| City | Cold Lake |
| County | ALBERTA |
| Province | AB |
| Postal Code | T9M 1P3 |

Exterior

| | |
|--------------|-------------------|
| Exterior | Block, Wood Frame |
| Construction | Block, Wood Frame |

Additional Information

| | |
|----------------|------------------|
| Date Listed | March 12th, 2025 |
| Days on Market | 49 |
| Zoning | Zone 60 |

DATA IS DEEMED RELIABLE BUT IS NOT GUARANTEED ACCURATE BY THE REALTORS® ASSOCIATION OF EDMONTON. COPYRIGHT 2025 BY THE REALTORS® ASSOCIATION OF EDMONTON. ALL RIGHTS RESERVED. Trademarks are owned or controlled by the Canadian Real Estate Association (CREA) and identify real estate professionals who are members of CREA (REALTOR®, REALTORS®) and/or the quality of services they provide (MLS®, Multiple Listing Service®)

Listing information last updated on April 30th, 2025 at 5:32am MDT