

## \$0 - 210 9252 34 Avenue, Edmonton

MLS® #E4424690

**\$0**

0 Bedroom, 0.00 Bathroom,  
Office on 0.00 Acres

Strathcona Industrial Park, Edmonton, AB

Prime Office Space for Lease on 34 Avenue in South Edmonton! This fully furnished office space offers 3 private office rooms along with access to a shared open office area. Conveniently located in a high-demand business district, this space is move-in ready â€” perfect for professionals, small businesses, or remote teams looking for a flexible and affordable workspace. Great access to major roads, transit, and nearby amenities. Ideal opportunity to establish your business in a sought-after southside location!

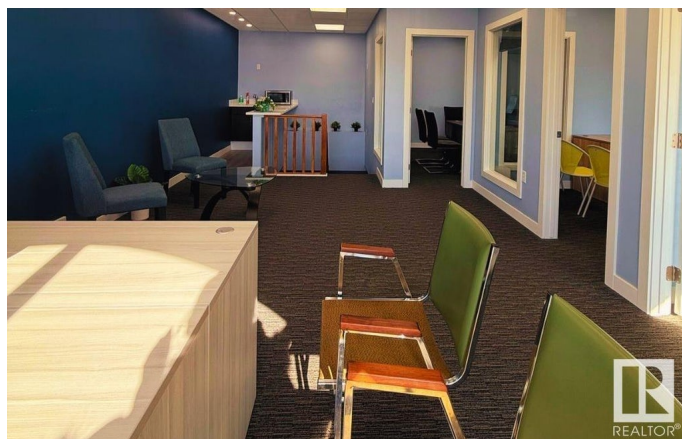
Built in 1998

### Essential Information

MLS® #	E4424690
Bathrooms	0.00
Acres	0.00
Year Built	1998
Type	Office
Status	Active

### Community Information

Address	210 9252 34 Avenue
Area	Edmonton
Subdivision	Strathcona Industrial Park
City	Edmonton
County	ALBERTA



Province	AB
Postal Code	T6E 5P2

**Exterior**

Exterior	Mixed
Construction	Mixed

**Additional Information**

Date Listed	March 5th, 2025
Days on Market	56
Zoning	Zone 41

DATA IS DEEMED RELIABLE BUT IS NOT GUARANTEED ACCURATE BY THE REALTORS® ASSOCIATION OF EDMONTON. COPYRIGHT 2025 BY THE REALTORS® ASSOCIATION OF EDMONTON. ALL RIGHTS RESERVED.Trademarks are owned or controlled by the Canadian Real Estate Association (CREA) and identify real estate professionals who are members of CREA (REALTOR®, REALTORS®) and/or the quality of services they provide (MLS®, Multiple Listing Service®)

Listing information last updated on April 30th, 2025 at 10:17am MDT