

# \$1,095,000 - 28011 Hwy 16, Rural Parkland County

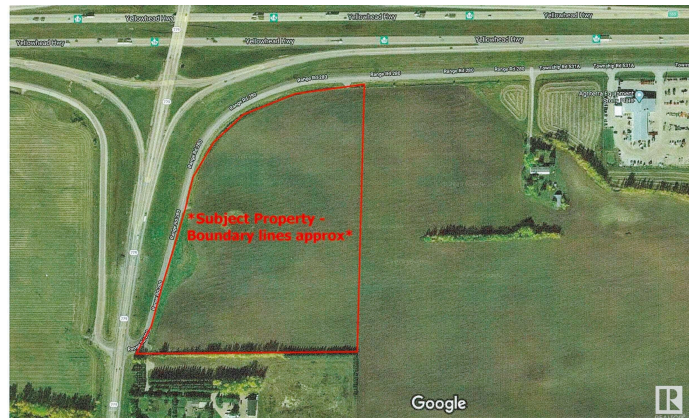
MLS® #E4418107

**\$1,095,000**

0 Bedroom, 0.00 Bathroom,  
Land Commercial on 0.00 Acres

Parkland Business Park, Rural Parkland  
County, AB

Highway 16 & SH 779 frontage! Located off  
service road (Rge Rd 280) to provide easy  
access and high visibility. Great speculation or  
for rezoning for a single use owner is most  
probable or possible subdivision.



## Essential Information

MLS® #	E4418107
Price	\$1,095,000
Bathrooms	0.00
Acres	0.00
Type	Land Commercial
Status	Active

## Community Information

Address	28011 Hwy 16
Area	Rural Parkland County
Subdivision	Parkland Business Park
City	Rural Parkland County
County	ALBERTA
Province	AB
Postal Code	T7Z 1C2

## Additional Information

Date Listed	January 15th, 2025
Days on Market	97

## Zoning

## Zone 70

DATA IS DEEMED RELIABLE BUT IS NOT GUARANTEED ACCURATE BY THE REALTORS® ASSOCIATION OF EDMONTON. COPYRIGHT 2025 BY THE REALTORS® ASSOCIATION OF EDMONTON. ALL RIGHTS RESERVED. Trademarks are owned or controlled by the Canadian Real Estate Association (CREA) and identify real estate professionals who are members of CREA (REALTOR®, REALTORS®) and/or the quality of services they provide (MLS®, Multiple Listing Service®)

Listing information last updated on April 22nd, 2025 at 6:02am MDT