

\$4,999,000 - 6115 91 Street, Edmonton

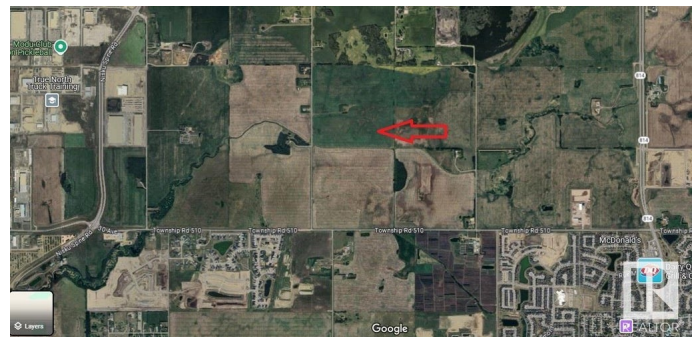
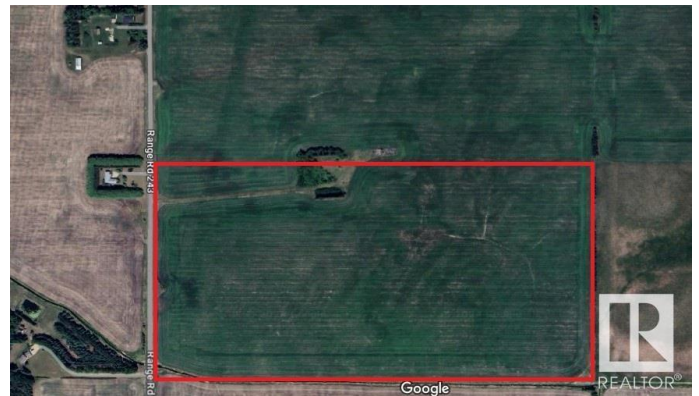
MLS® #E4414606

\$4,999,000

0 Bedroom, 0.00 Bathroom,
Land Commercial on 0.00 Acres

Edmonton South Central East, Edmonton, AB

Located in the recently adopted (March 1, 2024) Edmonton South Central East Neighborhood within the Ellerslie District, this 80 acres of agriculture is in the City of Edmonton, yet adjacent to Leduc County & the City of Beaumont. Recently included in the 2019 Annexation between the municipalities, this parcel is located on what was Range Road 243 and now addressed as 91 street, just north of Township Road 510 on the East side of the road. Designated as part of the City of Edmonton's UNABSORBED INDUSTRIAL LAND SUPPLY in the City of Edmonton's Industrial Investment Action Plan 2024 also indicates it is located in a FUTURE GROWTH AREA. The current zoning is agriculture and the future zoning recommendations by the City of Edmonton in their most recent discussions are subject to change based on information provided by the City's website.



Essential Information

| | |
|-----------|-----------------|
| MLS® # | E4414606 |
| Price | \$4,999,000 |
| Bathrooms | 0.00 |
| Acres | 0.00 |
| Type | Land Commercial |
| Status | Active |

Community Information

| | |
|-------------|-----------------------------|
| Address | 6115 91 Street |
| Area | Edmonton |
| Subdivision | Edmonton South Central East |
| City | Edmonton |
| County | ALBERTA |
| Province | AB |
| Postal Code | T6X 2T1 |

Additional Information

| | |
|----------------|---------------------|
| Date Listed | November 22nd, 2024 |
| Days on Market | 157 |
| Zoning | Zone 33 |

DATA IS DEEMED RELIABLE BUT IS NOT GUARANTEED ACCURATE BY THE REALTORS® ASSOCIATION OF EDMONTON. COPYRIGHT 2025 BY THE REALTORS® ASSOCIATION OF EDMONTON. ALL RIGHTS RESERVED. Trademarks are owned or controlled by the Canadian Real Estate Association (CREA) and identify real estate professionals who are members of CREA (REALTOR®, REALTORS®) and/or the quality of services they provide (MLS®, Multiple Listing Service®)

Listing information last updated on April 28th, 2025 at 6:32am MDT