

# \$0 - 112 111 Broadway Boulevard, Sherwood Park

MLS® #E4314318

**\$0**

0 Bedroom, 0.00 Bathroom,  
Retail on 0.00 Acres

Broadview Park, Sherwood Park, AB

2,400-2,850 sq.ft retail/office space located on Broadway Boulevard in Sherwood Park. Other professional tenants include: Core Wellness and Chiropractic, Drift Float Studio & Massage, Celtic Management, Park Veterinary, and Investors Group. Located near Windsor Plywood, Align Orthodontics, and the Bethel Transit Terminal

Built in 2003

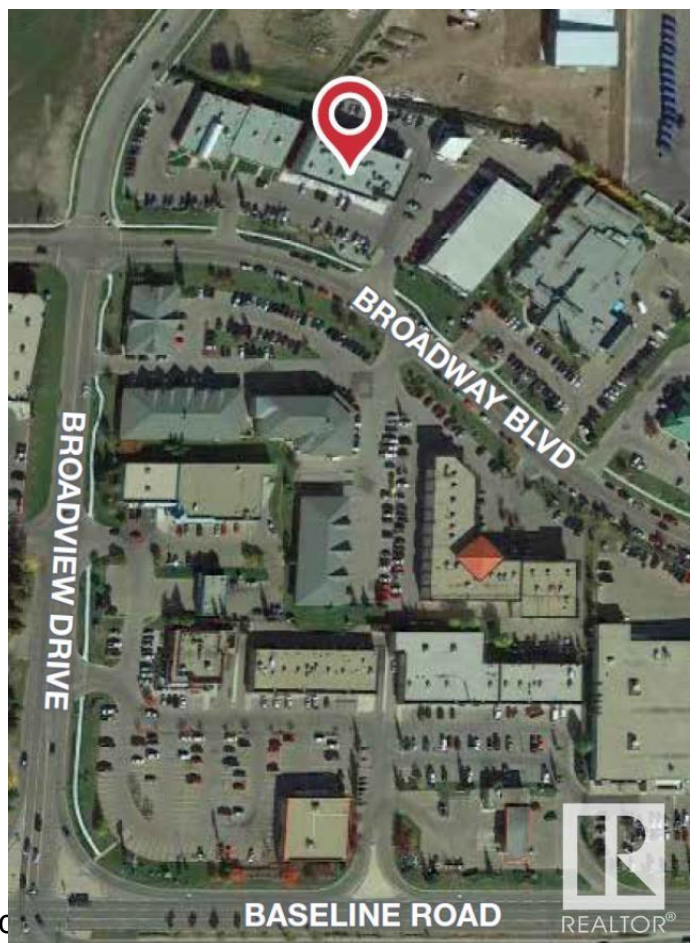
## Essential Information

MLS® #	E4314318
Bathrooms	0.00
Acres	0.00
Year Built	2003
Type	Retail
Status	Active

## Community Information

Address	112 111 Broadway Boulevard
Area	Sherwood Park
Subdivision	Broadview Park
City	Sherwood Park
County	ALBERTA
Province	AB
Postal Code	T8H 1T1

## Exterior



Exterior	Concrete, Wood Frame
Construction	Concrete, Wood Frame

### **Additional Information**

Date Listed	September 21st, 2022
Days on Market	905
Zoning	Zone 25

DATA IS DEEMED RELIABLE BUT IS NOT GUARANTEED ACCURATE BY THE REALTORS® ASSOCIATION OF EDMONTON. COPYRIGHT 2025 BY THE REALTORS® ASSOCIATION OF EDMONTON. ALL RIGHTS RESERVED. Trademarks are owned or controlled by the Canadian Real Estate Association (CREA) and identify real estate professionals who are members of CREA (REALTOR®, REALTORS®) and/or the quality of services they provide (MLS®, Multiple Listing Service®)

Listing information last updated on March 14th, 2025 at 9:17am MDT